



DRAFT DUBLIN AIRPORT LOCAL AREA PLAN

September 2019



Fingal Development Plan 2017-2023

www.fingal.ie

25
BLIANA
YEARS

Comhairle Contae
Fhine Gall
Fingal County
Council





Introduction

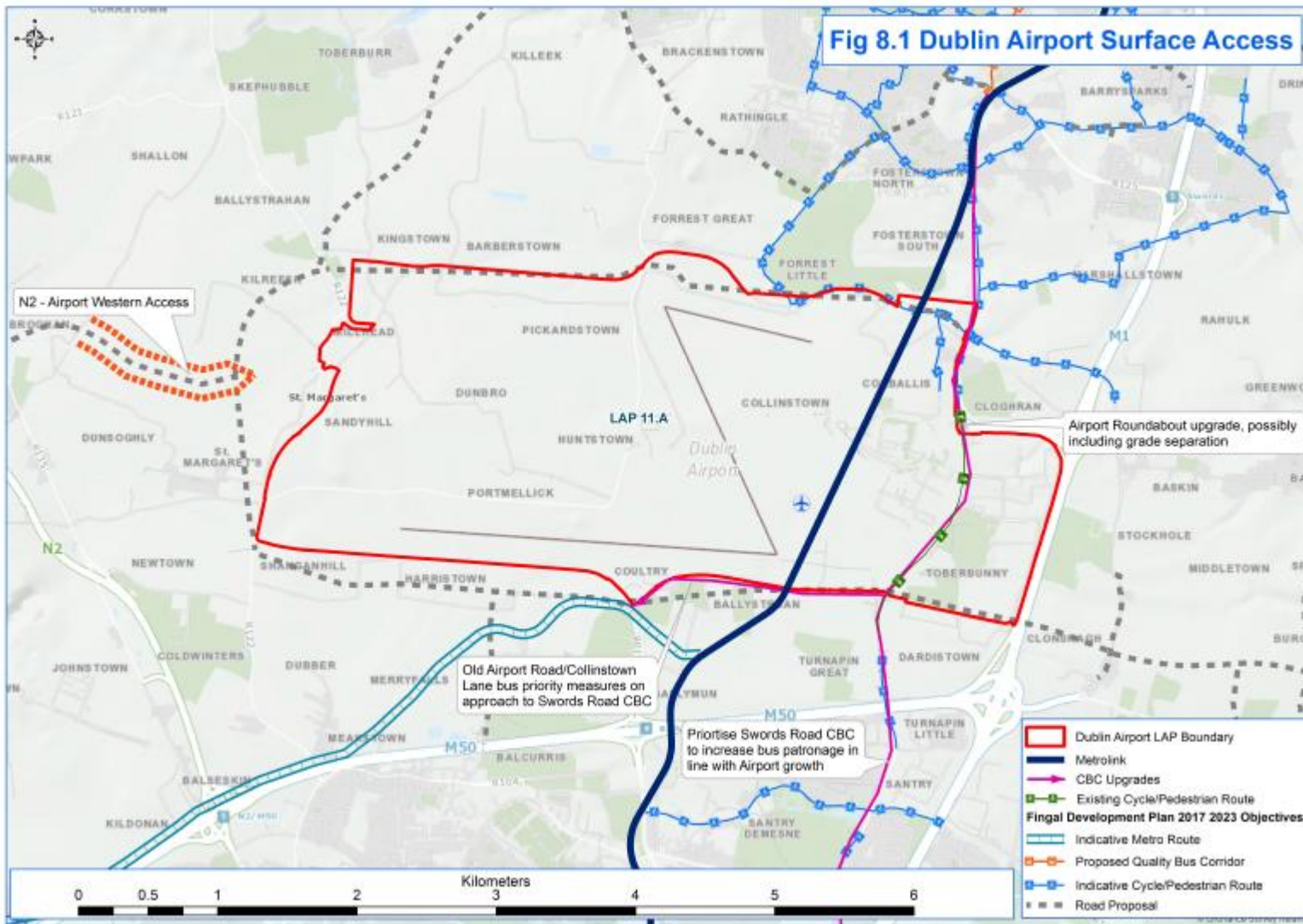
- Purpose of LAP
 - Principle guidance document to guide future development and growth of the Airport
 - 6 year life
- Recognise role of Dublin Airport
 - Transport gateway
 - Primary economic driver
 - Protect and safeguard strategic national asset
 - Anticipate and support future growth



Key Themes

1. Introduction and rationale
2. Context
3. Forecasts and Capacity Constraints
4. Vision and Strategic Objectives
5. Transition to a Low Carbon Economy
6. Economic Impact of Dublin Airport
7. Airport Infrastructure
8. Surface Access and Transport
9. Environment and Community
10. St. Margarets Special Policy Area

Surface Access





Variation No. 1 to Fingal Development Plan 2017 - 2023

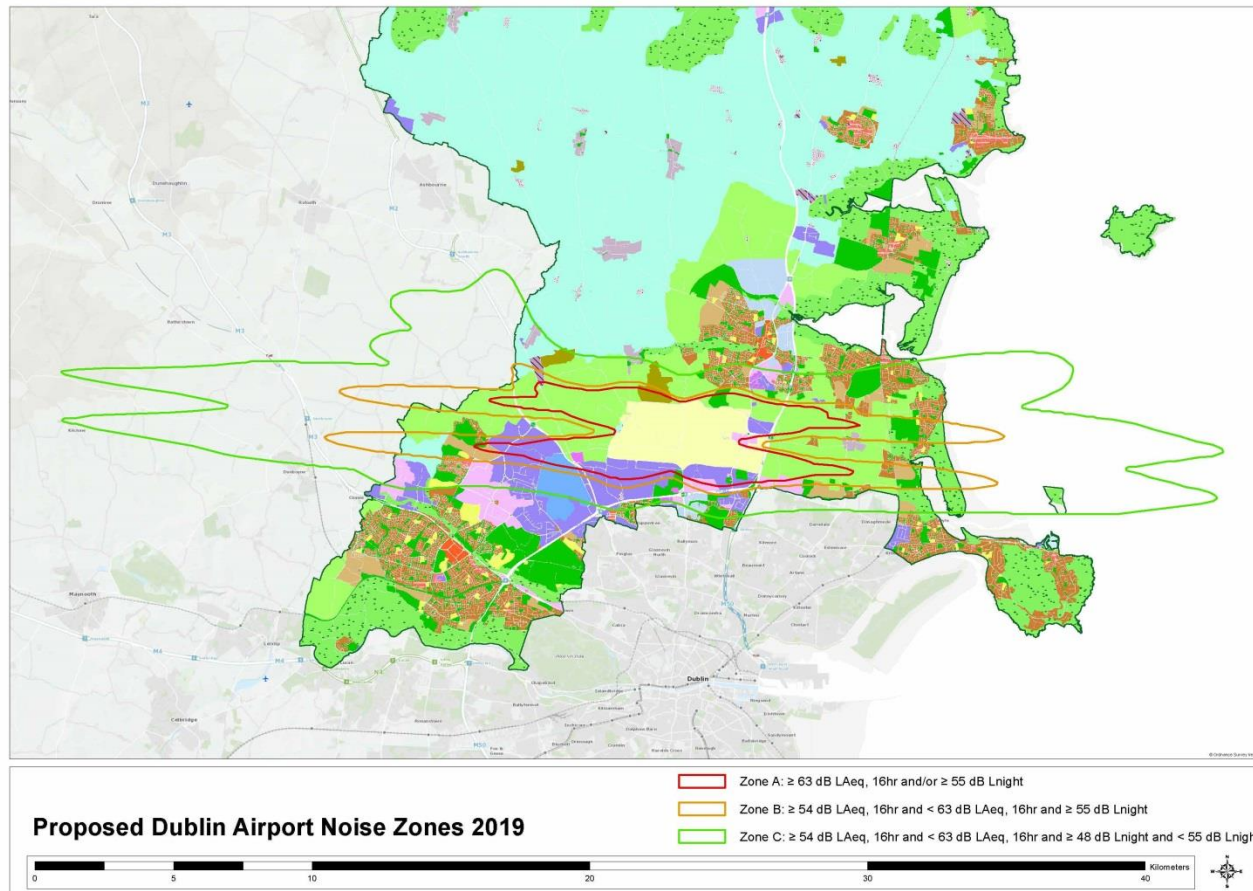


Contents of Variation

- Updating of Development Plan to reflect amendments to legislation and guidance on noise impact.
- Impact from road, rail and aviation
- Amendment to noise zones serving Dublin Airport
- Update of rural settlement policy
- Information on noise assessment to be submitted with planning applications
- Updating of safety information on Airport approach zones



Proposed Noise Zone Map



Noise Assessment Zones



The revised noise zones aim to ensure protection of existing and future Communities and enterprises which may be affected by aviation noise.

Zone A – equivalent to previous “inner” zone - resist new provision for residential development and other noise sensitive uses

Zones B and C - equivalent to the former ‘outer zone’ policy which was to strictly control inappropriate development and to require noise insulation where appropriate:

- Zone B - Manage noise sensitive development and ensure noise insulation is incorporated within noise sensitive development
- Zone C – Manage noise sensitive development and ensure an appropriate level of noise insulation

Zone D – new zone introduced to identify noise sensitive developments, to promote appropriate land use and identify encroachment